

Turnberry

2670 sq. ft. (Elev. A)
2692 sq. ft. (Elev. B)



Elevation B

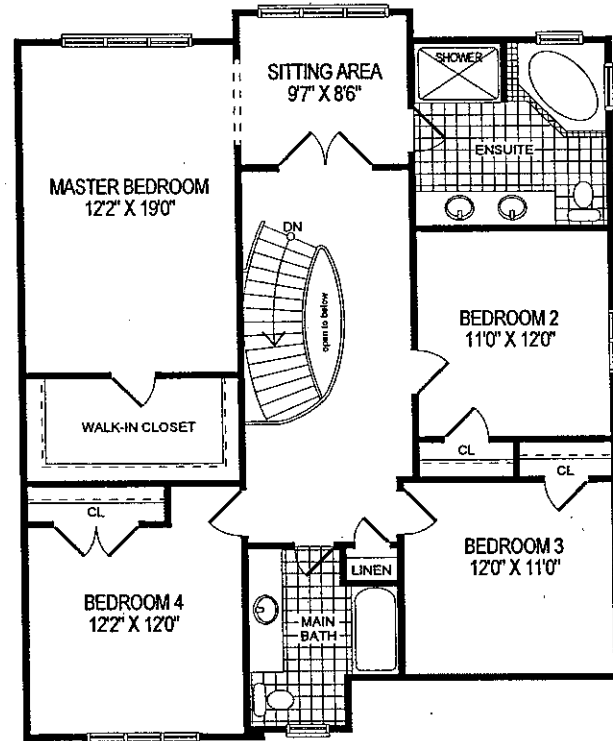
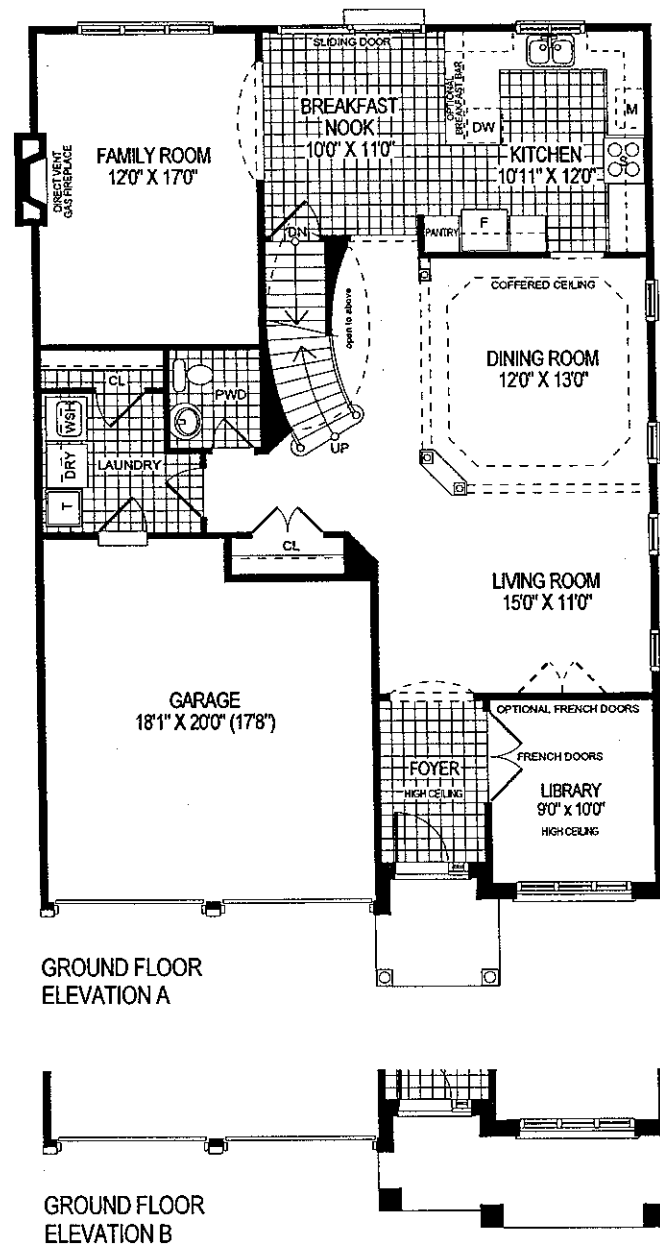


Elevation A

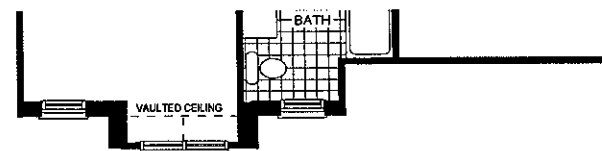
MUIRFIELD

HOMES
Since 1989

*Designed for Living...
Built for Life*



SECOND FLOOR
ELEVATION A



SECOND FLOOR
ELEVATION B

Turnberry

2670 sq. ft. (Elev. A)

2692 sq. ft. (Elev B)

A beautifully detailed facade with recessed garage greets you as you enter the Turnberry. Inside, the foyer and adjacent library have added drama with high ceilings and double french doors. An entertainment-sized living room and dining room await, defined by elegant demi-walls with columns and optional coffered ceiling. Beyond the elegant curving stairway are the family room and kitchen areas. The spacious kitchen features a peninsula island with optional breakfast bar and pantry cupboard. A roomy main floor laundry room is a practical feature for family life. Upstairs, the master suite features a sitting area for quiet relaxation, a huge walk-in closet and a five-piece ensuite. The ensuite boasts an oversize shower, soaker tub and his-and-hers sinks. Three more roomy bedrooms provide room for the family in this elegant home.

MUIRFIELD
HOMES
Since 1989